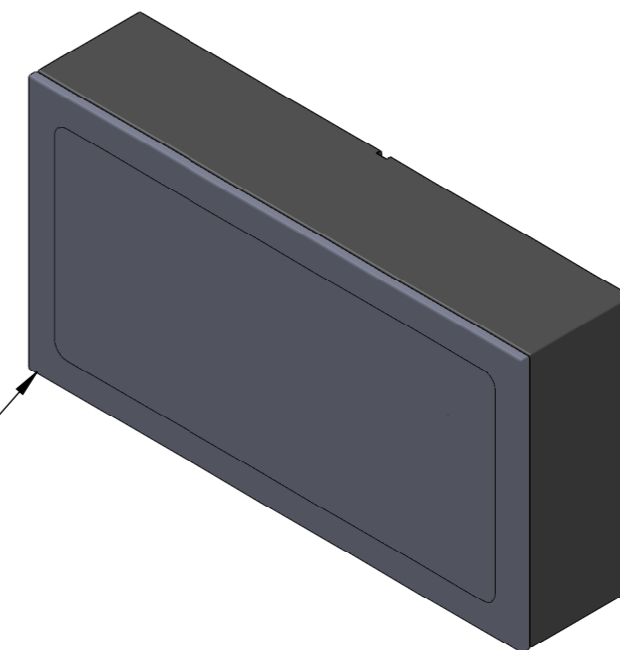
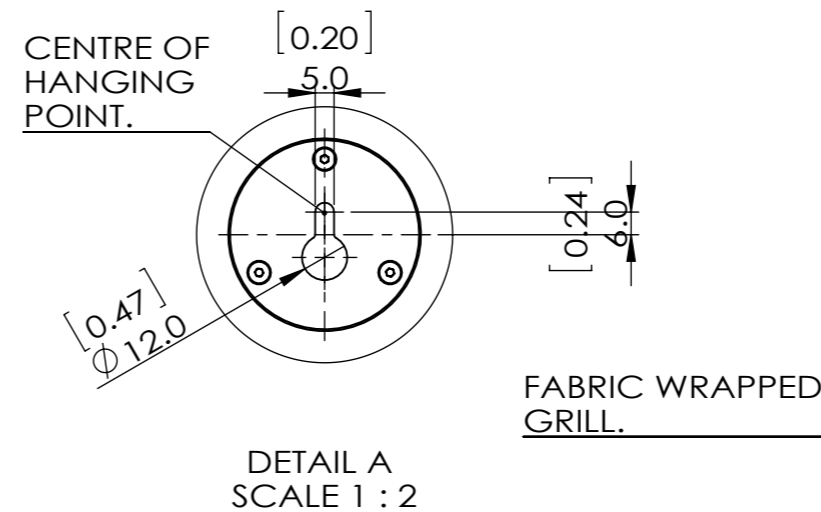
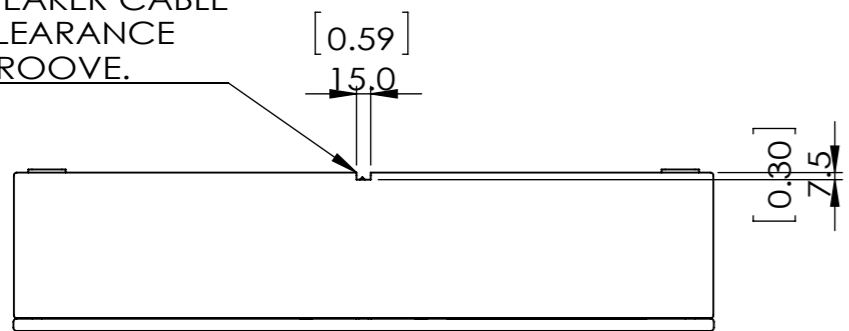
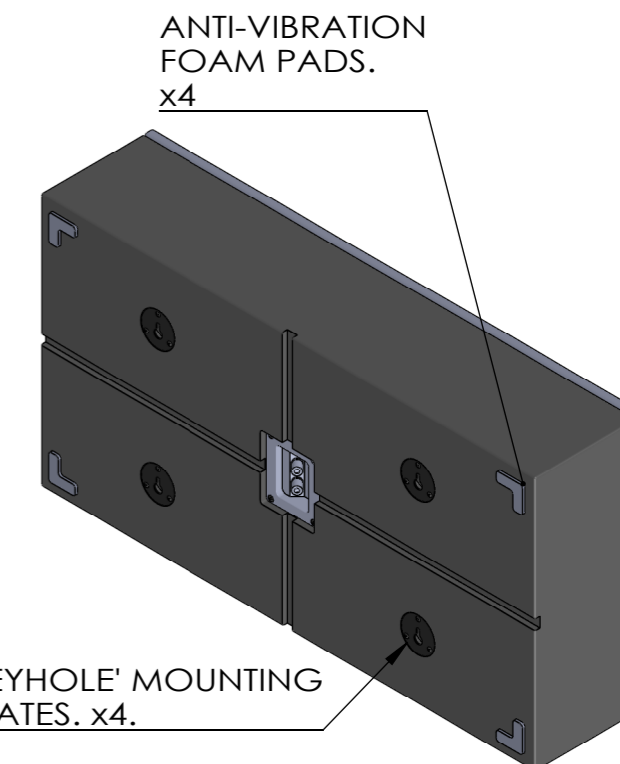
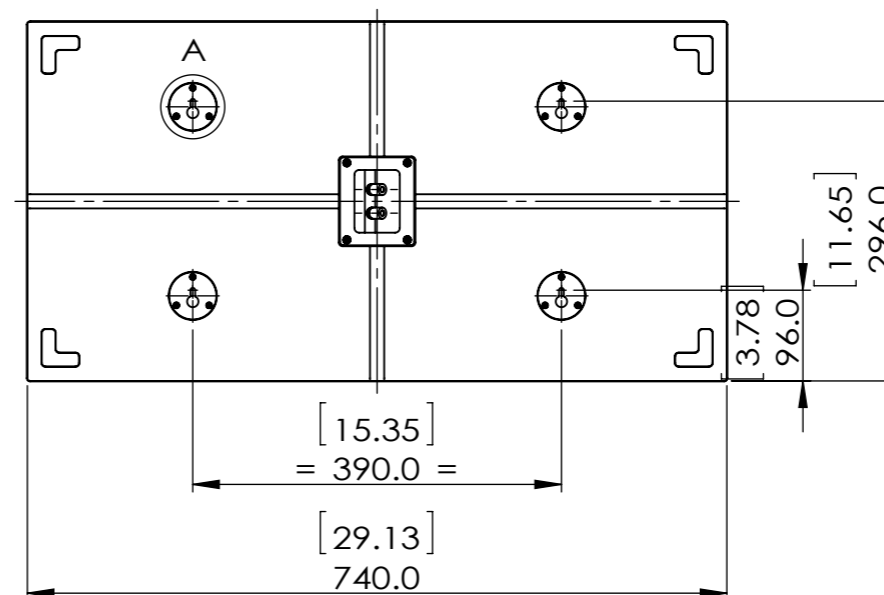
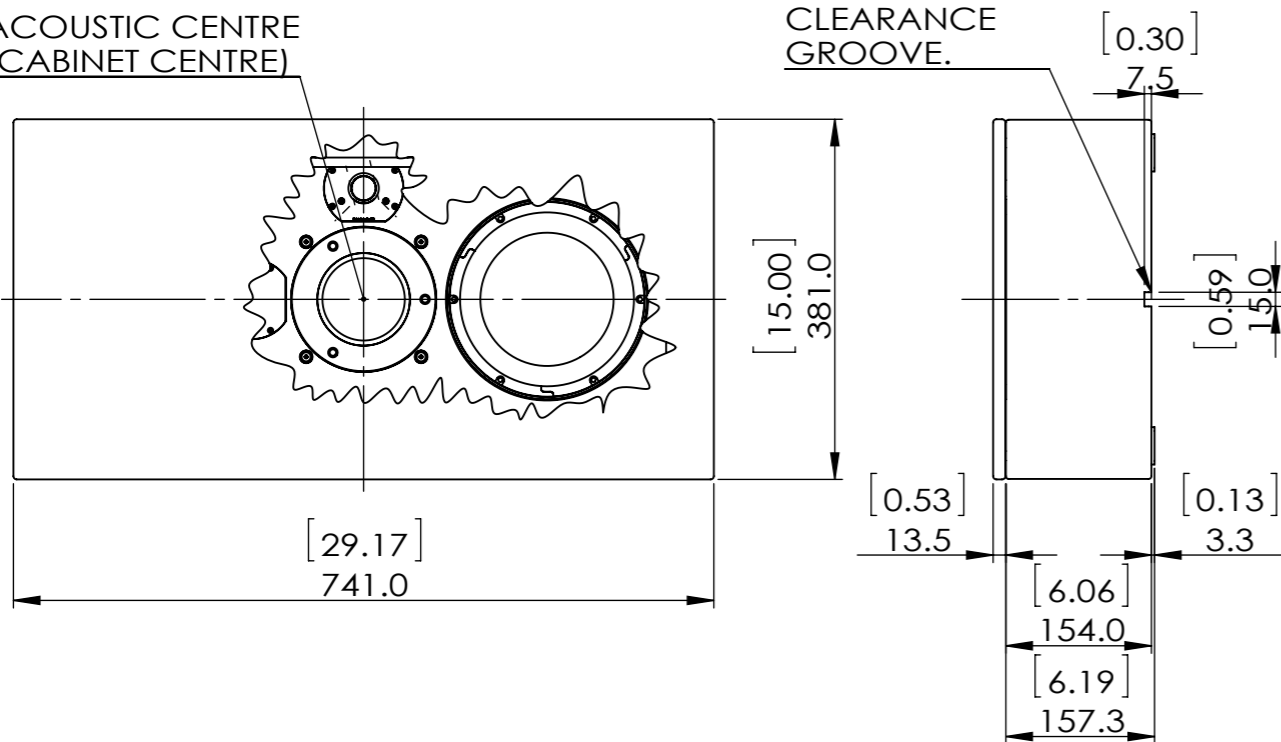


SPEAKER CABLE CLEARANCE GROOVE.



ACOUSTIC CENTRE (CABINET CENTRE)



WEIGHT: 23KG/50.6LBS
 COLOUR OPTIONS: SATIN WHITE AND SATIN BLACK PAINT
 DIMENSIONS IN MM AND [INCHES]
 HTS40 & HTS40C USE IDENTICAL CABINETS IN TWO DIFFERENT CONFIGURATIONS

- REMOVE ALL BURRS & SHARP EDGES (BREAK ALL EDGES - MAX 0.2 RAD)
- PLEASE PACK & HANDLE TO AVOID ANY DENTS, BRUISING & SCRATCHES
- THIS IS A COSMETIC PART
- THERE MUST BE NO VISIBLE MACHINING MARKS

REV	DATE	DRAWN	CHK'D	APPV'D	MODIFICATION
*	00-00-00	***	***	***	***
A	00-00-00	***	***	***	NEW DRAWING - SOLIDWORKS

 LOUDSPEAKER TECHNOLOGY LTD GYPSY LANE ASTON DOWN STROUD GLOUCESTERSHIRE GL6 8HR TELEPHONE: 01285 760561 www.atc.gb.net	MATERIAL:	PROJECT	
	FINISH: SATIN BLACK OR SATIN WHITE PAINT	HOME THEATRE SERIES (HTS) SPEAKERS	
©LOUDSPEAKER TECHNOLOGY LTD 2012 ALL RIGHTS RESERVED. This form and any attachments to it, may not be reproduced or transmitted, in any form or by any means, or stored in any system, without the prior written consent of Loudspeaker Technology Ltd, and if requested, must be immediately returned to Loudspeaker Technology Ltd.	DWG NO.		REV
	HTS40C ASSEMBLY		A
	TITLE		
HTS40C ASSEMBLY - CUSTOMER			
TOLERANCES UNLESS OTHERWISE STATED		WEIGHT	
MACHINED DIMENSIONS	SHEET METAL DIMENSIONS		SCALE
ONE DECIMAL PLACE: +/- 0.25MM	INTERNAL	EXTERNAL	1:8
TWO DECIMAL PLACES: +/- 0.10MM	UNDER 15 : +0.20	-0.20	PAPER
ANGULAR: +/- 0.50DEG	15 TO 100 : +0.35	-0.35	A3
	OVER 100 : +0.50	-0.50	SHEET 1 OF 1
ALL DIMENSIONS IN MILLIMETRES U.O.S. - REMOVE SHARP EDGES			

THIRD ANGLE PROJECTION